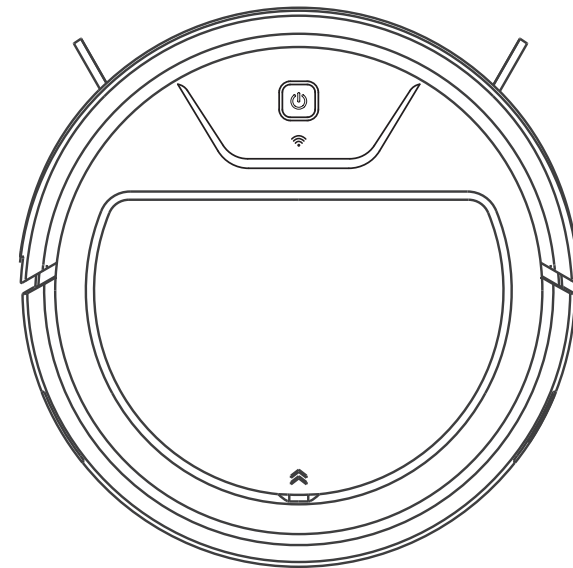


Robot vacuum cleaner

User manual



"CE" marking states that the product is compliant to European Directives
2006/95/CE Low Voltage Directive
2004/108/EC EMC Directive
It is possible to request a full copy of Declaration of compliance to the Distributor:
This product complies with the rules of RoHS Directive(2002/95/CE)
This product complies with the rules of Eup Directive(2009/1255/CE)



Thank for choosing Robot vacuum cleaner!
Please read the user manual carefully before using it. please keep for future reference.
We hope to bring you more convenient and intelligent life.

This product is subject to real thing. we have the right to update product.
Any change without prior notice.

Thank you again for choosing intelligent sweeping robot!

| Page | Catalogue |
|------|-------------------------------|
| 1 | Safety instructions |
| 3 | Product parts |
| 3 | Host chart |
| 5 | Charging dock chart |
| 5 | Remote contoler chart |
| 6 | Product specification |
| 7 | Accessories list |
| 8 | Product operation |
| 8 | Matters needing attention |
| 9 | Charging Mode |
| 10 | Install the side brush |
| 11 | Romote control operation |
| 12 | Host start to sweep |
| 13 | Schedule cleaning |
| 15 | Download APP and instruction |
| 15 | Sweeping mode |
| 18 | The water tank operation |
| 19 | Maintain |
| 19 | Dust box and fliter cleaning |
| 20 | Water tank component cleaning |
| 20 | Other component cleaning |
| 22 | Troubleshooting |

Before using

During using.Maintain

Confusing

Safety instructions

Be sure to comply

During use, please maintain consistent vigilance, please comply the following matters:
Read the user manual carefully before using the product.
Please keep the user manual well.

Caution

- 1.1、 Please follow the user manual instruction to use the product.
Any unconformity with user manual will destroy the product .
- 1.2、 Children under 8 years old and the person with mental disorder can not use the product alone.
Need guardian when use the product, Please not allow the children to sit on it and play as toy.
- 1.3、 Before using it, please clear the cable and small things on floor, in void of block.
Fold the edge of the carpet under the carpet, keep the edge of curtain and tablecloth from floor.
- 1.4、 If there is such an environment as a stairway lamp suspended,
Please first test whether the product can detect the edge of the suspended area without dropping
Please make sure it will not cause injury such as tripping.
- 1.5、 Please make sure the voltage of adapter comply with the voltage marked on charging dock.
- 1.6、 Please use it in door, do not use it outdoor.
- 1.7、 Please only use the original rechargeable battery and charging dock. Please do not use non-chargeable battery. As for battery Spec. please check "products Specs"
- 1.8、 Please make sure the dust box and filter are installed well before using the product.

Dangerous

- 2.1、 Please do not use it in an open fire or fragile product environment.
- 2.1、 Using during -10 to 50 degree, do not use under lower or higher temperature
- 2.2、 Keep hair, clothes, fingers etc away from the opening or moving parts.
- 2.3、 Under dust collection mode, do not use it in humid environment or the place is with water.
- 2.4、 Please do not use the product to absorb any combustible object, such as gas, printer or photocopier toner. Please do not use it in the environment with combustible objects.
- 2.5、 Do not let the robot to absorb any burning object, such as cigarette, the match, ashes etc.
- 2.6、 Please do not put anything on suction mouth of robot, clear them away if there are dust,
hair, cotton wool. Ensure the suction mouth is well aerated.
- 2.7、 Please use the cables carefully, do not destroy it. Please do not use the cable to drag or pull the robot or charging dock. Do not clip the cable to the door. Do not pull the cable on sharp corner. Please do not let the robot move on the cable. The cable should be kept away from heat source.

Safety instructions

Be sure to comply

Caution

- 3.1、 if the cord is damaged, avoid of dangerous, the cord should be changed by manufacturer or professional technician.
- 3.2、 Please do not use the damaged charging dock.
- 3.3、 please do not use the damaged power cord or charging dock to charge product.
Please do not use the product when it is damaged by dropping, using at out door, or water. To avoid of hurt, the product should be repaired by manufacturer or after-sales service center.

Caution

- 4.1、 Before clear or maintain the product, please make sure pull out the plug from charging dock. And turn off the power.
- 4.2、 Please do not let the robot absorb water etc liquid, avoid of broken.
- 4.3、 Please do not disassemble the battery without permission
- 4.4、 Please clear up the hair on universal wheel and side brushes.
- 4.5、 When use water tank to mop the floor, do not turn over the machine.
Avoid of the PCPA being broken by water.
- 4.6、 Wet drapping mode on carpet is prohibited. No water stain on the water tank.
- 4.8、 Please clear the garbage inside of dust box, avoid of the filter is blocked and impact the clearing effect.
- 4.9、 Before discarding the product, please take it off from charging dock, turn off the power and take out the battery. Please comply to local law to discard battery.

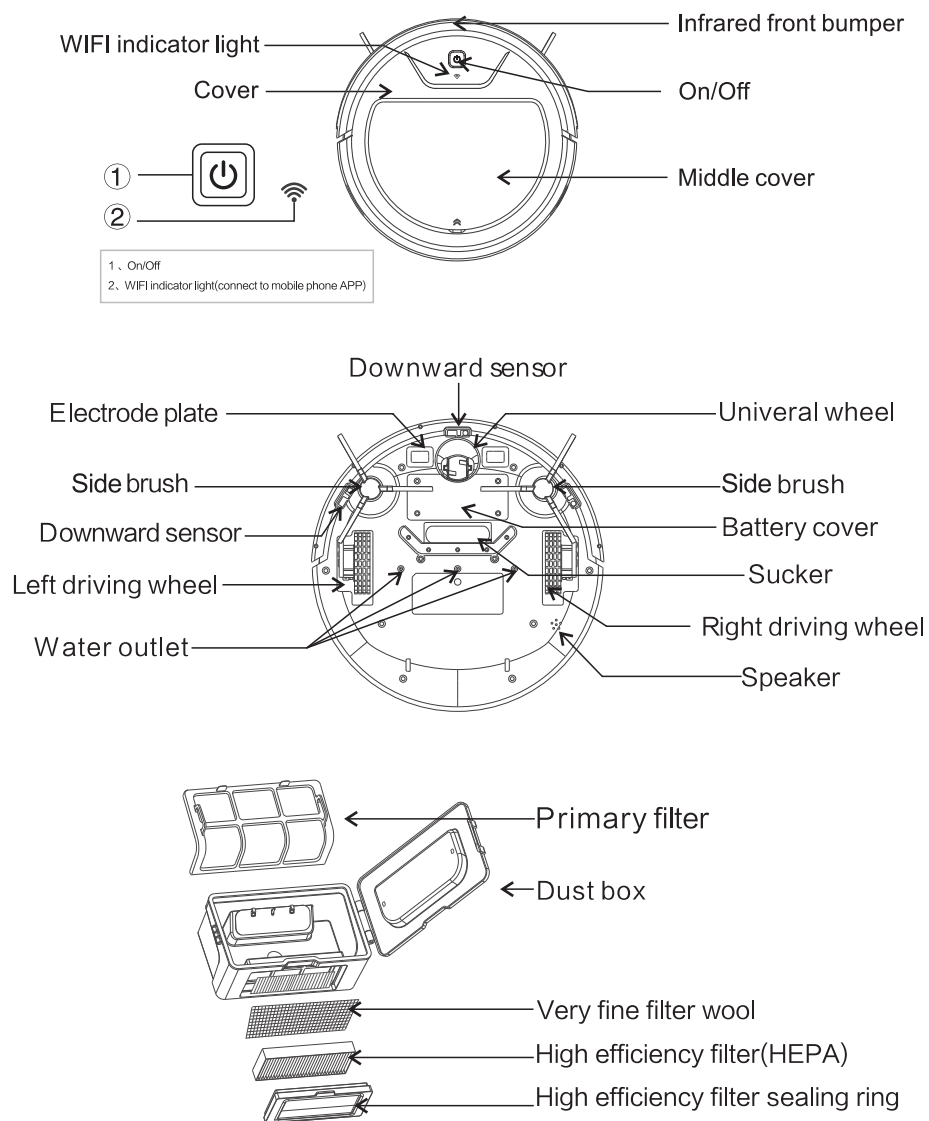
Dangerous

- 5.1、 Please do not burn the robot even it is broken. fire will lead to explode.
- 5.2、 Please cut off the electric when long time nonuse.
- 5.3、 Please check whether charger and charging dock connect properly.
otherwise will lead to fire .
- 5.4、 Connect the charger power cord tightly, otherwise will lead to electric shock ,
short circuit or fire.
- 5.5、 Please do not stand or seat on robot, this will lead to destroy the robot or hurt the person.
- 5.6、 Do not touch the cable when hands is wet, otherwise there is possible to
lead to electric shock.
- 5.7、 Only authorized technicians can disassemble the product , Users please do
not disassemble the product.

Component

know about product

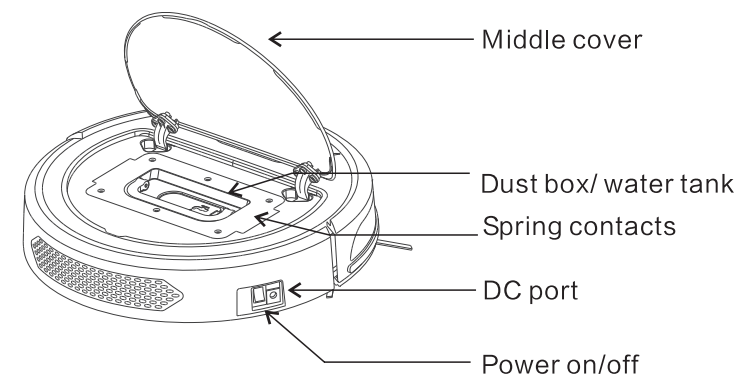
2.1 Host chart



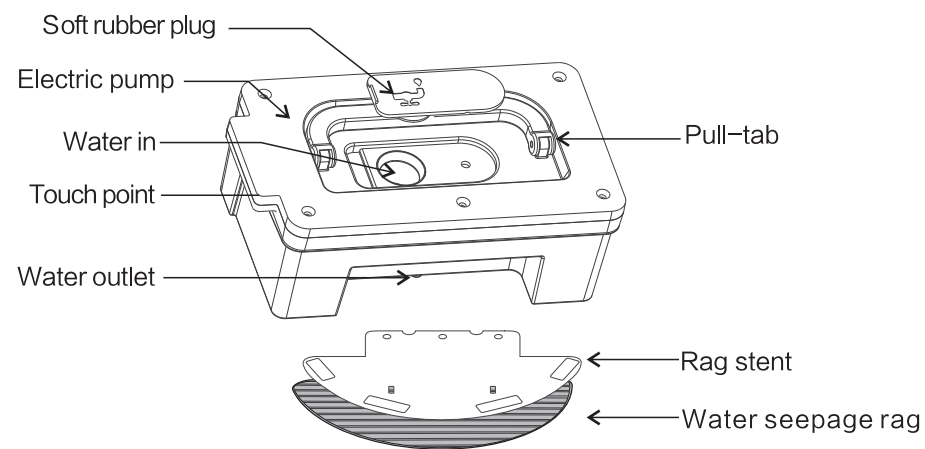
Component

know about product

2.2 Host chart



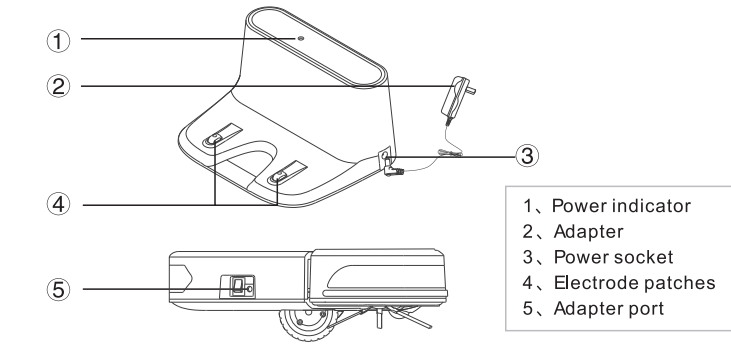
water tank chart



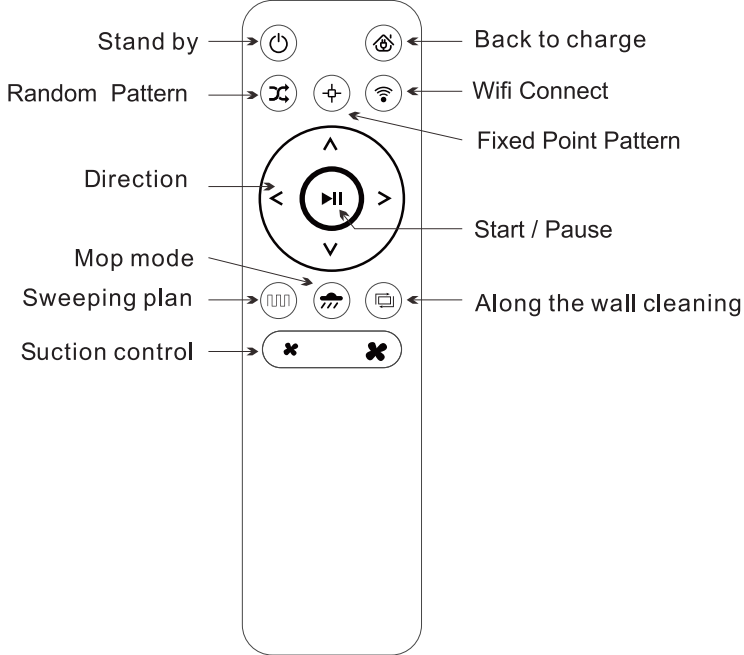
Component

know about product

2.3charging dock



2.4remote control



Specifications

know about product

| Classify | item | specs. |
|-----------------|-------------------|--|
| Structure | diameter | 320mm |
| | height | 78mm |
| | net weight | 2.8kgs |
| Electrics | Voltage | 14.8v |
| | battery | li-ion battery 2600mAh |
| | power | 28W |
| Sweeping Specs. | dust box volume | 600ml |
| | water tank volume | 350ml |
| | charging mode | auto/ manual |
| | sweeping mode | planning 、 spot along wall、 schedule mop floor |
| | Charging /time | about 280mins |
| | sweeping /time | about 100-120mins |
| host key type | | Physical buttons |

| | | | |
|-------------------------------|---------------------------|----------------------|----------|
| Model No. | | | |
| work voltage (V) | 14.8 | power (W) | 28 |
| charging dock | | | |
| input (V) | 19 | output current (A) | 0.6 |
| main part model No.and specs. | | | |
| remote control model | KM-151 | input (V) | 3 |
| battery and specs | Li-ion battery 2600mAh | | |
| adapter model | NLB060190W1C4S35 | | |
| input | 100~240V 0.6A MAX 50/60Hz | output | 19V 0.6A |

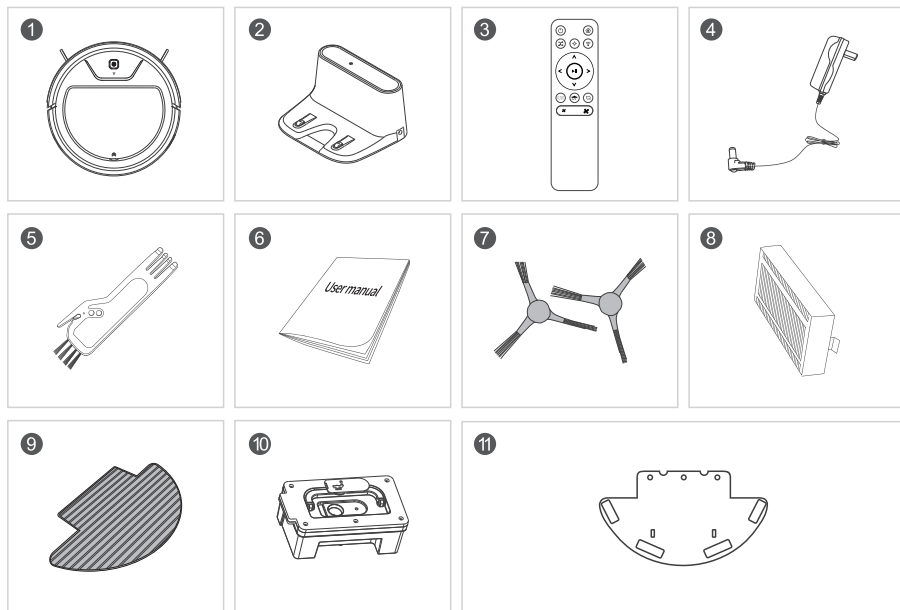
As product will be improved continuously,our company keep the right to change tech, design.
The right of interpretation is owned by our company
Different models' function is no different, just the color and out look is little difference.

Accessories

know about product

List

| Item | Description | Quantity |
|------|--------------------------------------|----------|
| 1 | Host (including battery) | 1 |
| 2 | Charging dock | 1 |
| 3 | Remote control(battery not included) | 1 |
| 4 | Adapter | 1 |
| 5 | Cleaning brush | 1 |
| 6 | User manual | 1 |
| 7 | Extra side brushes | 2 |
| 8 | Extra HEPA filter | 1 |
| 9 | Extra water seepage rag | 1 |
| 10 | Water tank | 1 |
| 11 | Rag stent | 1 |

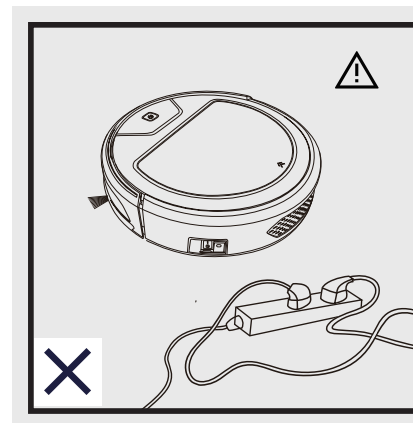


Operation

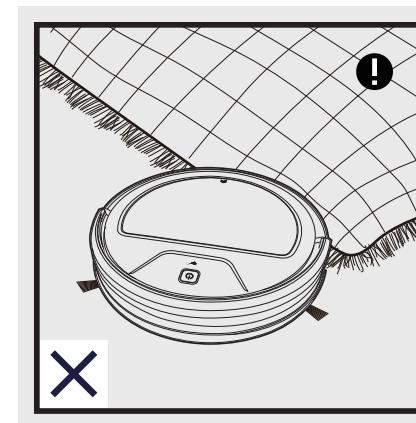
know about product

Matters needing attention:

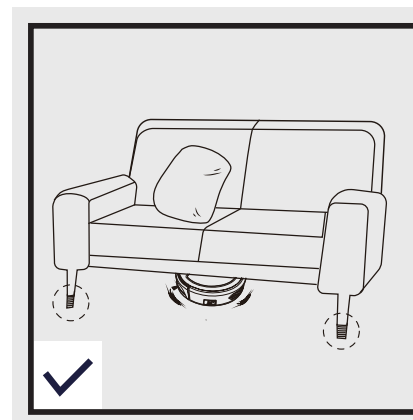
Before using it, please refer to the following instruction to check cleaning area.



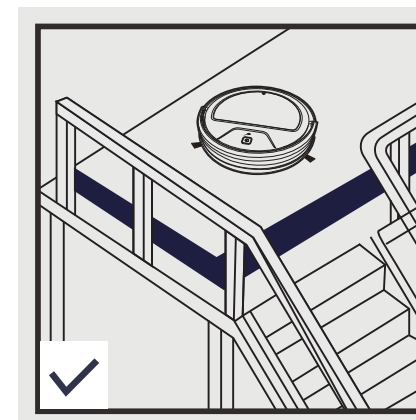
Sundries such as power cords scattered on the ground can trip or entangle products, please move them.



Roll up the side of the carpet fringe or work on undercoat carpet



If the space of furniture bottom is less than 8cm Please pad it when you clear the area, otherwise the robot will be stuck.



Double layer edges should be protected to make sure the product's safety operation.

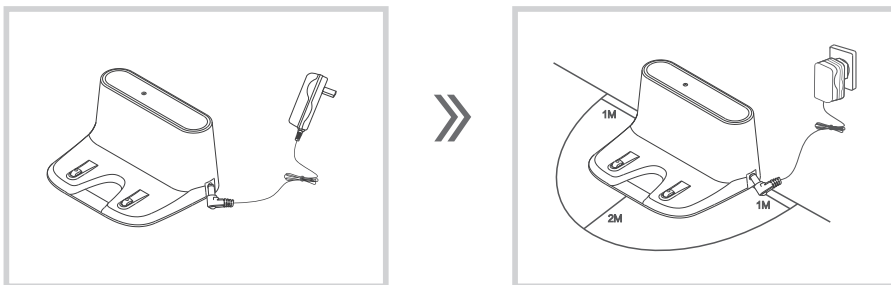
Operation

Be sure you understand

3.1 Charging

① Charging dock placement


In order to let the machine find charging dock in time, suggest to place the charging dock along the wall, keep anything away from it 2 meters in front of it and 1 meter at right and left side (as photos)

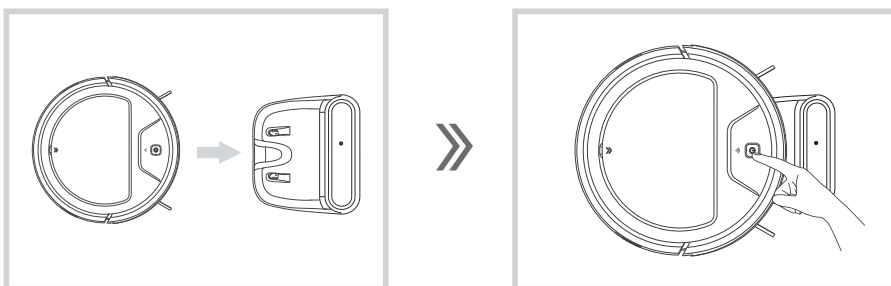


*Warm prompt

After charging dock is connected to adapter, the light on the top of charging dock is on.

② Charging automatically

- A. Under sweeping model, when power is low, machine will find charging dock to charge. (as photo)
- B. Under choosing model, press automatic charging key , machine will search charging dock and to charge itself.
- C. Press start/stop button for 3 seconds, will enter the automatic recharge mode.



*Warm prompt

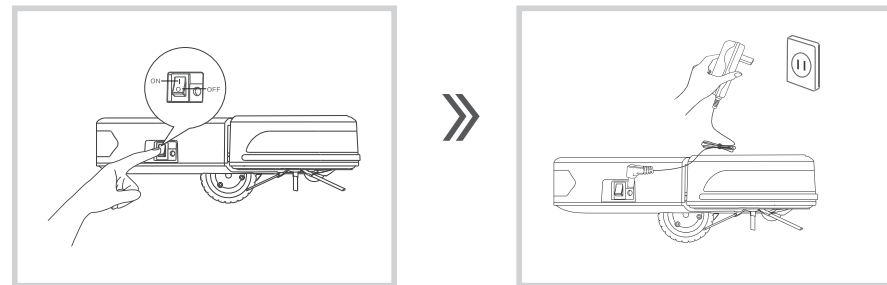
Daily use it, please clean the electrode slice on charging dock, otherwise will impact charging .

Operation


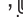
Be sure you understand

③ Manual charging

Turn on the power switch on the side of the machine, panel key's indicator light flashing (1 for on, 0 for off). Connect the adapter, the other side of DC adapter connect to machine (as following pictures)



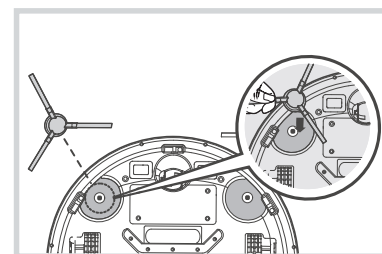
*Warm prompt

- A. Please charge for 12 hours at the first time,  the key with orange light, means during charging. When finish charging,  Green light normally on.
- B. During daily use, please put the machine on charging dock, and make sure the charging dock is plugged in.
- C. Long time nonused, please charge the machine fully. Turn off the power, and put it in a dry and ventilated place.
- D. When set schedule mode, do not use manual charging mode, suggest to use automatic charging mode.

④ Install side bush

Please install the side brush according to the bottom of out case.

Please make sure to install the brush well.



Operation

Be sure you understand

3.2 Remote control

1 Stand by ☺

Press the key for the machine entering sleep mode, please press key [⏸] if wakeup is required.

The machine may automatically enter sleep mode if no operation on it within 2 minutes

2 Sweeping plan [⏮]

Press the key in selection mode for machine's Sweeping plan, please press key [⏮] if requiring a pause

3 Back to charge 🏠

Press the key to automatically back to charge for the machine

4 Start / Pause [⏮]

Press the key for a pause when the machine in operation, press the key for wakeup when the machine in sleep mode.

5 Direction

- | | |
|------------------|---|
| A " ^ " Forward | Press the key to drive the machine forward in selection mode |
| B " v " Backward | Press the key to drive the machine backward in selection mode |
| C " < " Left | Press the key to drive the machine left in selection mode |
| D " > " Right | Press the key to drive the machine right in selection mode |

6 Mop mode 🚿

Press the key to start the machine mopping after installing water tank and wipe bracket correctly.

7 Random Pattern [⏮]

Press the key in selection mode for machine's random cleaning, please press key [⏮] if requiring a pause

8 Along the wall cleaning [🏠]

Press the key to start the machine cleaning along the wall corner

9 Fixed Point Pattern [⊕]

Press the key to start the machine's spiral point cleaning

10 WIFI Connect 📶

Press this key for 3 seconds to start matching Wifi remote connections

11 Suction control ✖✖

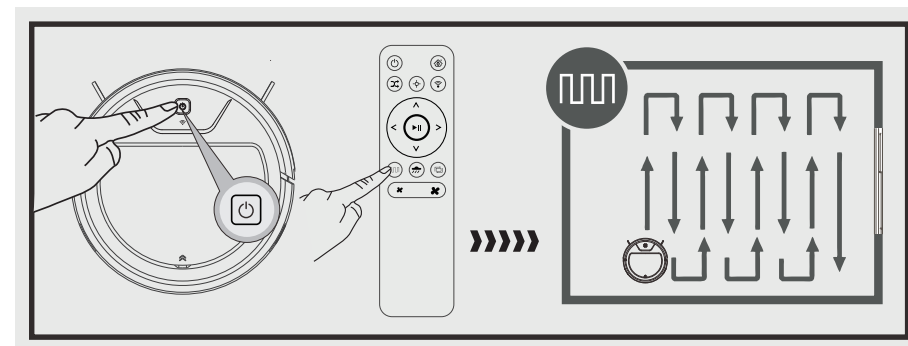
Press the key in work mode to switch between "quiet / strong" suction

Operation

Be sure you understand

3.3 Start cleaning

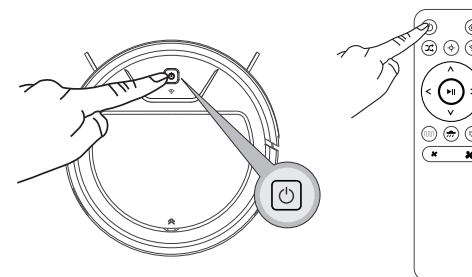
press button [⏮] shortly or press remote control button [⏮] shortly, start automatically sweeping mode.



- * Before start this mode, should make sure [⏮] button with green light on.
The machine is awakened
- * If the machine was not awakened, press [⏮] shortly or remote control [⏮] button to wake it up.
Machine will enter sleeping mode after standby for 2 minutes. [⏮] button and 📶 light is off, WIFI does not work.
If need to choose other mode, please refer to "mode choice" content.

3.4 Stop working

press the key [⏮] shortly
or remote control key [⏮],
the machine will stop working.



* Warm prompt

- *Please take off battery and keep it well if long time do not use the machine.
If the battery leak , please take off the battery and clean the battery case.
- *When battery is over-discharged or long time unused, the capacity will be lower,
suggest to activate the battery.
The way to activate: put the machine on charging dock charge it for 3 minutes and
take off, do this 3 times, then charge for 3-5 hours.
- *The battery is with long life, no need to change frequently. If you need to
change, please contact our after-sales center.

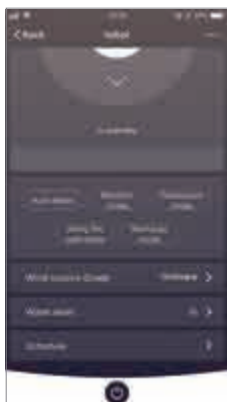
Product Operation

Be sure to know

3.5 Preset

For the convenience of cleaning, the product is equipped with the function of “Scheduled Cleaning”. You should set the scheduled cleaning time through the mobile phone APP connected to the machine. After the preset is complete, the machine shall perform cleaning at the set time every day. (Please refer to “APP Operation Guide” for the specific method of connecting the machine to the mobile APP.)

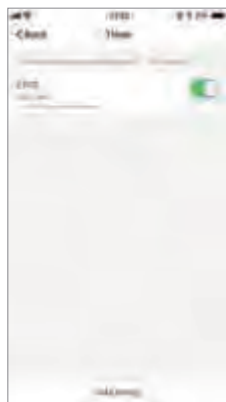
Before setting the time, make sure the green light of the  key on the machine is always on and the machine is in the startup state. If the machine is not started, press the  key on machine or the  key on remote control to start it.



Select Preset Time



Edit Scheduled Cleaning Time



When to cancel the scheduled settings, delete the preset time in “Scheduled” item.

3.6 Disconnect the Machine

Disconnect with the Mobile Phone

1. Log in the APP
2. In operation interface of APP, click “My” - “Family Management” - “Family Name” - “Remove Family” - “Confirm to Leave” .
3. After the device is disconnected, if you need to connect it again, please refer to “APP operation guide” for re-connect.



Operation

Be sure to know

3.6 APP download and instructions (Some products do not have this function)




This product supports remote control by mobile APP. Use your phone to scan the QR code on the right to download the APP and operate with the prompts or search for the “Tuya Smart” APP in APP market.





*Please refer to the APP Operation Guide for more functions.

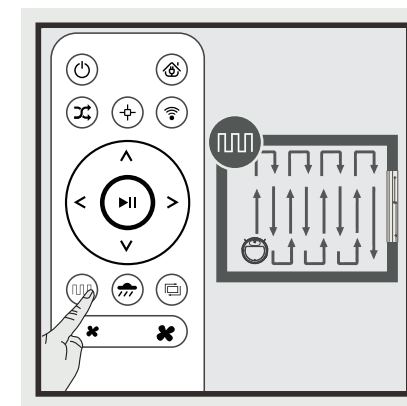
3.7 Choose modes

The product is with several modes of sweeping for different status of floor. You can choose through remote control

- * Through remote control or APP to switch between any mode,
- * Make sure  button's green light is on, host is wake up. If host is not wake up, please press  or remote  , wake it up.


① plan sweeping mode

The daily sweeping mode, press this key , Machine start to plan sweeping automatically, when there is obstacle, it will change direction. (press  or remote  key, machine will stop working)





Operation

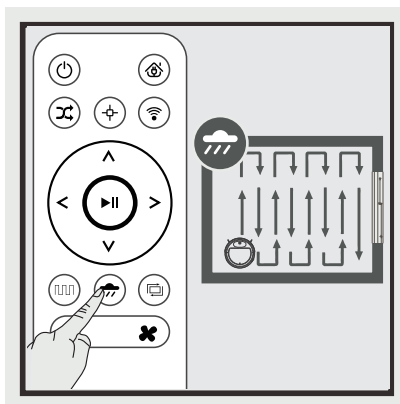
Be sure to know

*press  key, machine will sweep automatically. It will sweep follow path. During sweeping, can automatically sense of missing areas to sweep it, higher efficiency.
*and will sweep the clean area again. In order to keep high efficiency. please do not operate the machine freely.
*the host will stop for a while during working, (checking if the area was lost or path planning). Please wait with patience. the times to stop or time length according to the complexity of home environment.

2 Mop the floor pattern

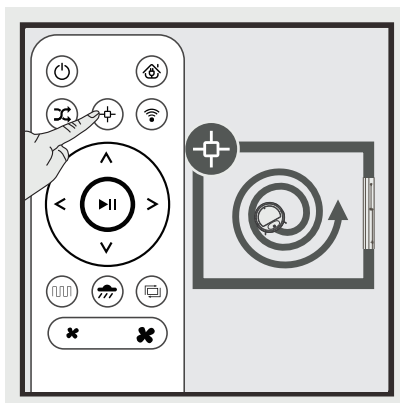
Install the bracket which is with cloth already at bottom of the machine, change the dust box to tank, press this key to mop the floor (press  or  key, host stops working) suggest first to clean dust then mop the floor.

*please do not use this function on carpet.



3 Fixed point sweep mode

Suitable for the ground where garbage is concentrated. Host will focus on pointed area to clean. Will clean along a spiral path. After finish sweeping, machine will back to original place and stop.

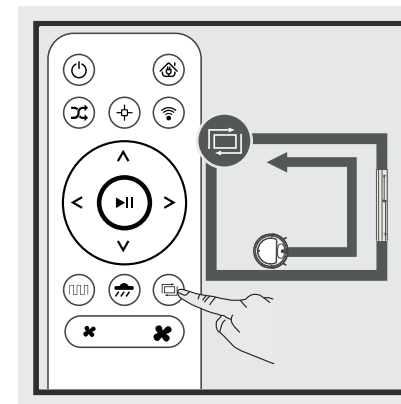


Operation



Be sure to know

4 Sweep along the wall mode

This mode is for cleaning the interior corners. Host will sweep along object, (like wall). After finishing sweep, host back to charge dock.

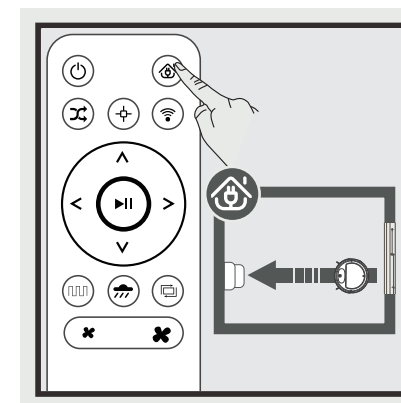


5 Back to charging mode


Press  on remote control or press  key on host for 3-5 seconds, host will back to charging dock automatically.

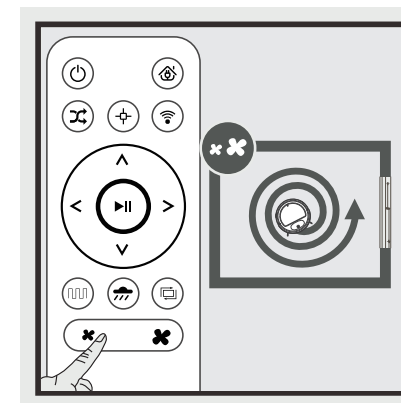
Need to put the charging dock well and connect power.

During sweeping, host will know when the power is low, and start "back to charge" model, search charging dock and charge automatically.



6 Suction control mode

This machine is with suction adjusting function. During work, press  switch to "quiet/strong" mode.



Operation

Be sure to know

4.1 Tank operation.

This machine is equipped with tank. After clean the floor, and need to mop the floor, please change the dust box to tank. The way to clean, please refer to user manual (maintain) chapter.



*During mop floor, if stop the work and add more water or clean the water seepage rag and restart the machine, it will plan the route again and will clean the floor where was mopped before. For better clean efficiency, suggest to mop single room.

*If need to mop the second room, suggest to move the host to the room and add water to tank or clean the water seepage rag according to actual situation

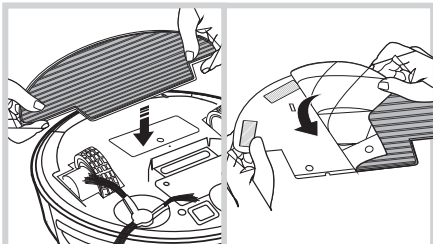
*If there are more rooms needs to be mopped, please refer to the 2nd point.

*Please do not mop on the carpet. If need to use water seepage rag to clean, please fold the edge of the carpet, avoid of the foreign material dirty the carpet

*During mop, please pay attention to it. Add water or clean water seepage rag in time. Please take off the tank when add water in it.

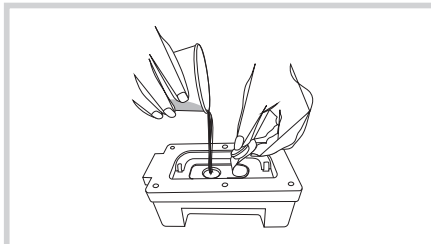
*Have to move the tank when charge the machine.

1 stick the water seepage rag



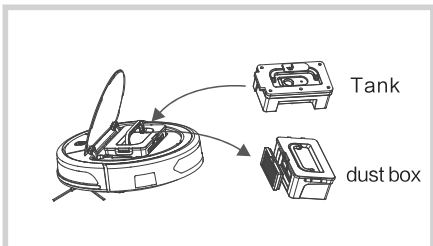
Fix the both sides of the water seepage rag along the lower end of the holder and stick the water seepage rag well. Install the holder with water seepage rag to the bottom of the host, attach to the bottom of the host.

2 Add water



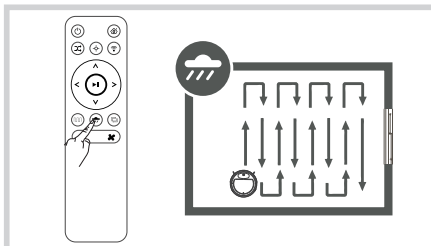
Open the injector rubber plug, add the water slowly, when add it fully, cover the rubber plug.

3 Install the tank



Open the cover of machine, move the dust box, put in the full tank.

4 Mop floor.



Start any mode of clean, machine will do mopping.

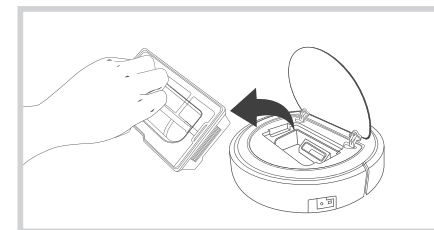
Maintain

Regular maintain lasts longer

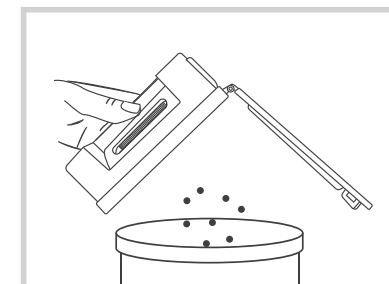
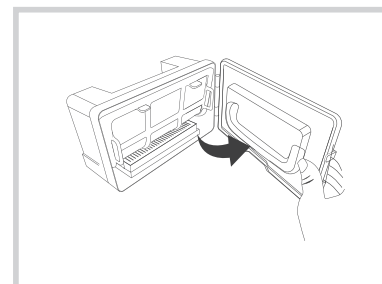
*Please turn off the charging dock when clean the host and accessories.

4.2 Clean dust box and filter

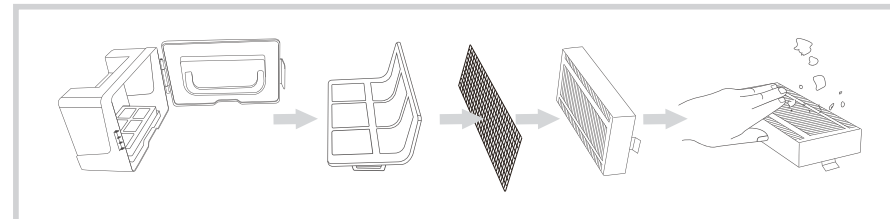
Remove dust box



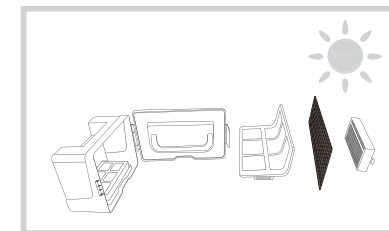
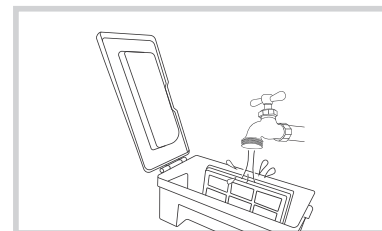
Open the dust box lock, clean garbage



Remove the filter, do not clear HEPA with water, pat it softly to clean dust.



wash the dust box and the primary filter, dry dust box and filter, keep them dry for longer life.



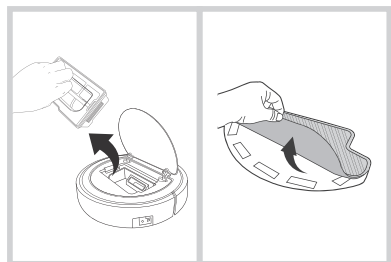
Maintain

Regular maintain lasts longer

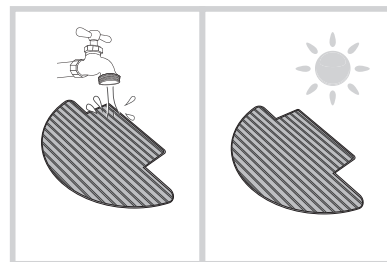
4.3 Clean tank

① clean the cloth.

Take off: after mop the floor, take off the tank, cloth and the holder,

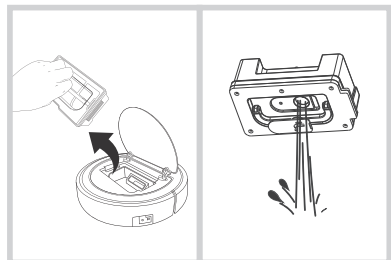


Maintain: wash and dry the cloth.

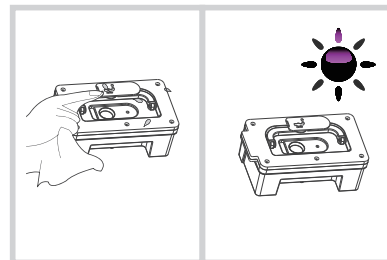


② Clean the tank.

Take off: after mop the floor, take off the accessories, remove the cloth, drain the excess water from the tank,



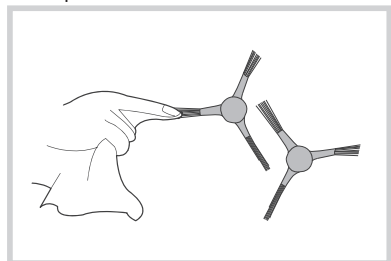
Maintain: wipe and dry the tank



4.4 Clean the other accessories.

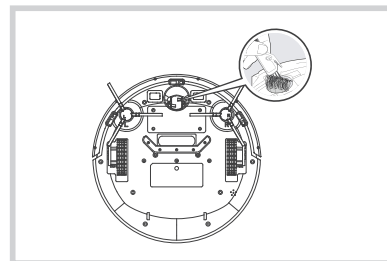
① clean the side brush.

Take off the side brush, wipe it with clean cloth.



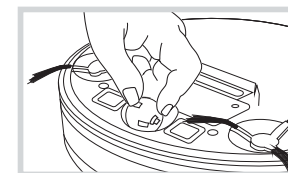
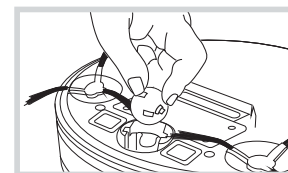
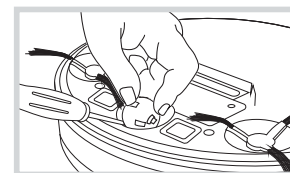
② Clean the universal wheel.

clean the universal wheel to deduct the hair.



Maintain

Regular maintain lasts longer



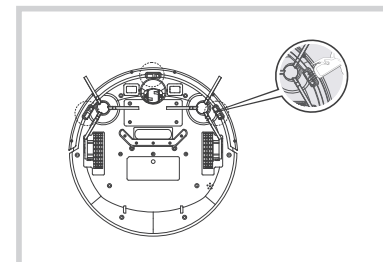
1st step: take out the universal wheel with special tool carefully.

2nd step: take off the wheel, and clear the hair

3rd step: put back the wheel, press it tightly.

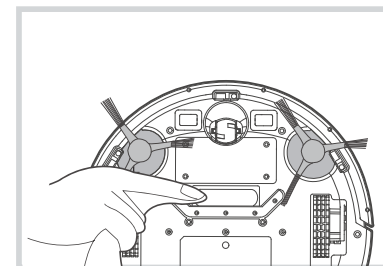
⑤ clean downward sensor

clean downward sensor
Ensure sensor's sensitivity



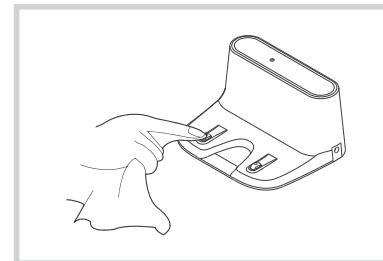
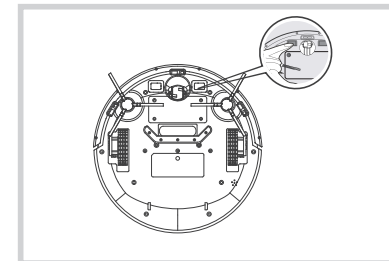
⑥ clean vacuuming mouth

Please use the cloth to clean the dust on vacuuming mouth



⑦ clean electrode patch.

use dry cloth to clean electrode patch on bottom set of host and on charging dock.



Trouble shooting

Do not worry in case of trouble

5.1 Instruction of Indicator light

| | |
|----------------------|------------------------|
| Host status | According to the state |
| charging | orange light flashes |
| Finish charge | Green light is on |
| Choosing mode | Green light flashes |
| machine with problem | red light is on |
| low power | orange light is on |
| sweep mode | Green light is on |

when machine is with problem, red light is on, at the same time, there is voice prompt. Move the machine, turn off the power and restart it.

5.2 Warning

when host is with problem, the red light will flash or is on. And there also will be different voice prompt. Please refer to the following reasons.

| item | voice prompt | Reason | Solution |
|------|--|---------------------------------------|---|
| 1 | power is low, please charge the robot | batter is lower than 12V | charge the host |
| 2 | battery problem | battery charging problem | contact factory |
| 3 | wheel is off the ground | during running, wheel is off ground | put on floor |
| 4 | please check the wheel whether is stuck | stuck | clean foreign matter |
| 5 | please check the side brush whether is stuck | side brush is stuck | clean foreign matter |
| 6 | fan is abnormal | fan has problem | contact factory |
| 7 | check whether front bump is stuck | infrared front bump or wheel is stuck | clean foreign matter |
| 8 | remove the machine to empty area | the host is stuck | Move the host to other place and restart it |
| 9 | cloth and bracket unsetted | do not set the bracket or cloth | install cloth and bracket |

*Warm prompt

Please try the following way if still can not solve the problem:

1. Turn on the side power switch, start the machine again.
2. If restart the machine still can not solve the problem, please contact after-sales center.

Trouble shooting

No worry face the problem

Meet the following problems during using the machine, please refer to the following information and solve them by yourself.

| Item | problem | possible reasons | solution |
|------|--|--|--|
| 1 | can not charge | The host is not full contact with the charging pads of the charging dock. | make sure the host and charging pads contact with each other well. |
| | | The power is turned off of charging dock, the power switch of host is turned off lead to power loss. | During unwork status, please charge the host for next time to use it well. |
| | | battery is over-discharged. | Activate the battery. Manually put the host on charging dock, charge it for 3 mins and remove it, then charge for 3 mins again, doing this for 3 times, it will work normally. |
| 2 | Get stuck at work | Was stopped by wires on floor, the edge of curtain and carpet. | machine will find solution to solve this problem, if failed, please help it manually. |
| 3 | Host back to charge but do not finish work/ | host can check out when power is low and back to charge automatically | charge the host |
| | | wooden floor, ceramic tile both are different floor, the speed and work time are different | the time is different according to different floor material, garbage and clean time is different. |
| 4 | Machine did not work as schedule | The power is off. The machine can not work under unwork situation. | turn on the power |
| | | power is lower | under standby mode, need put the host on charging dock to make sure the host is with full power to work |
| | | The host is stuck by garbage | Turn off the power and clean |
| 5 | Remote control does not work (control during 5 meters) | remote control power is lower | change the battery and install correctly |
| | | the host is turned off or the power is lower | make sure turn on the power and has enough power to finish work. |
| | | The remote infrared or host receiver is dirty, can not send or receive signal | clean it with clean cloth |
| | | there is infrared equipment to interfere signal | avoid putting the machine near other infrared equipments |

Trouble shooting

No worry face the problem

| | | | |
|---|---------------------------------|---|---|
| 6 | can not start the host | host is power off | charge the host or turn on the power switch |
| | move with shiver | Side brush or universal wheel are stuck | clean away the hair or dust from side brush or univesal wheel. |
| | abnormal dust absorption effect | The suction port is blocked or the dust box is full | check the suction port and clean the dust box |
| | | HEPA is stuck | clean HEPA or change it. |
| | water tank can not offer water | Injector is stuck or no water inside | blow through the injector or add water |
| | | tank power switch is not connected well | clean the touch point and put back the water tank and press it in place |
| | the host skid | the surface of floor is with water or wet. | dry the cloth and floor. |
| | the host is backward | downward sensors are abnormal | clean the surface of downsensors |

| Part | Harmful substances | | | | | |
|--|--------------------|----|----|------|-----|------|
| | PB | Hg | Cd | CrVI | PBB | PBDE |
| Plastic part | O | O | O | O | O | O |
| Hardware | O | O | O | O | O | O |
| PCBA of host | O | O | O | O | O | O |
| Battery | O | O | O | O | O | O |
| Cable of plug(metal) | O | O | O | O | O | O |
| <p>O: means the harmful substances in the components is lower than GB/T26572 limited</p> <p>X: means the harmful substances in the components is higher than GB/T26572 limited,till now no alternative material.Meet RoHs request.</p> | | | | | | |



The data 10 means with normal using, green life limited is 10 years



1141 Budapest, Fogarasi út 77.
 Tel.: *220-7940, 220-7814, 220-7959,
 220-8881, 364-3428 Fax: 220-7940
 Mobil: 30 531-5454, 30 939-9989

1095 Budapest, Mester utca 34.
 Tel.: *218-5542, 215-9771, 215-7550,
 216-7017, 216-7018 Fax: 218-5542
 Mobil: 30 940-1970, 30 959-0930

www.robotol.hu

E-mail: info@delton.hu Web: www.delton.hu